


M LED SABRE


A BRIGHT NEW WAY TO PROVIDE SAFE AND CRITICAL LIGHTING

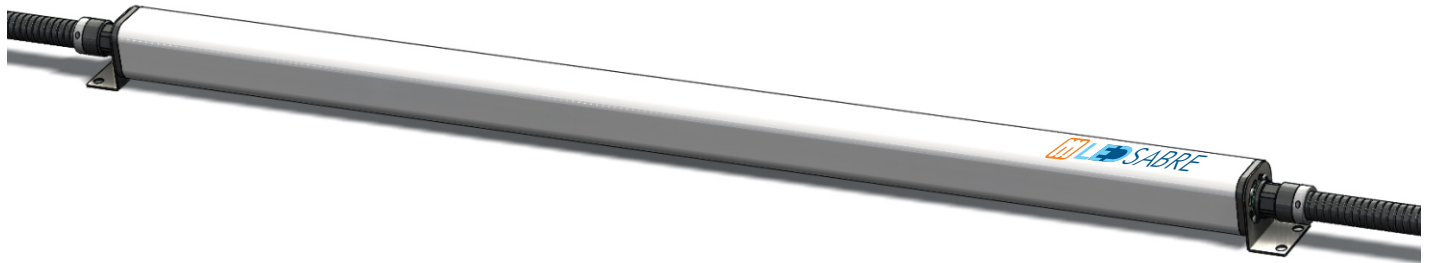
SABRE LED Lighting Fixture

Moltec International is ushering in a bright new way to provide safe and critical lighting for wind tower and nacelle applications. Our years of industry experience and in-depth research, design and testing has led to the development of our latest innovative lighting system. The new SABRE LED Light delivers superior performance and significantly reduces operational and maintenance costs compared to traditional light fixtures in the wind energy environment:

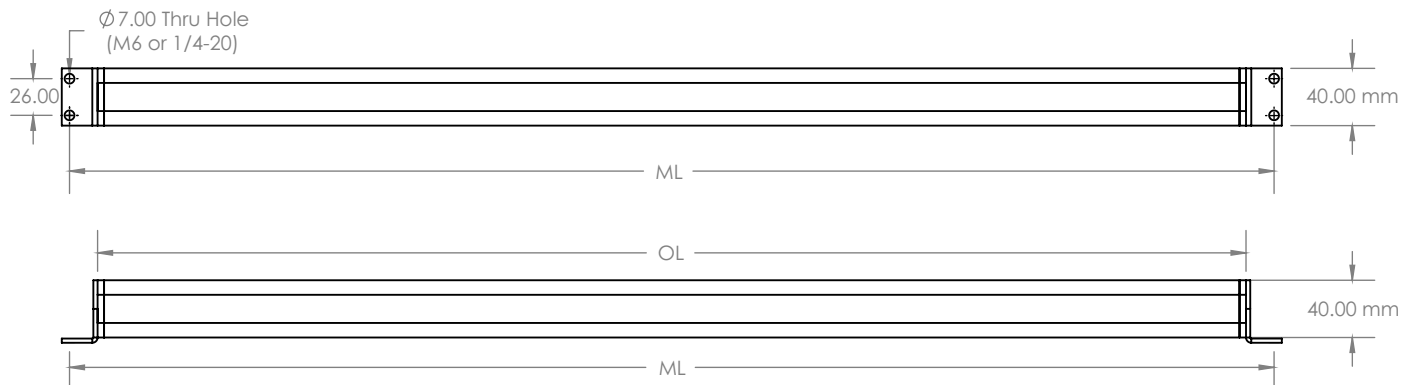
The SABRE LED Light provides improved efficiency; easily achieving industry photo-metric requirements in a significantly reduced size and weight. This allows for easy handling and installation within limited space areas without sacrificing lumen output or lighting coverage.

QUALITY

Our modern LED fixture is assembled in our facility to the quality system standard ISO 9001:2015 using high quality components and meticulous assemblers. This purpose-built durable design provides an impressive IK10 impact resistance as well as ingress protection up to IP67 and is backed by a five (5) year limited warranty. The heavy-duty polycarbonate protective lens provides outstanding diffusion and minimal glare. The result is uninterrupted high-performance service for the life of the turbine system.


M LED SABRE


	SAB-2	SAB-4	SAB-2-E	SAB-4-E	SAB-2-EH	SAB-4-EH
Input Voltage Rating	120 VAC to 277 VAC, 50Hz-60Hz					
Input Voltage Range	100 VAC to 300 VAC, 50Hz-60Hz					
Operational Temperature	-30°C (-22°F) to 50°C (122°F)	-30°C (-22°F) to 50°C (122°F)	0°C (32°F) to 50°C (122°F)	0°C (32°F) to 50°C (122°F)	-30°C (-22°F) to 50°C (122°F)	-30°C (-22°F) to 50°C (122°F)
Survival Temperature	-40°C (-40°F) to 60°C (140°F)	-40°C (-40°F) to 60°C (140°F)	-15°C (0°F) to 60°C (140°F)	-15°C (0°F) to 60°C (140°F)	-40°C (-40°F) to 60°C (140°F)	-40°C (-40°F) to 60°C (140°F)
Max. Power Input	30W	58W	31W	60W	55W @300V	95.2W @300V
Max. Current Input	0.3A @100V	0.584A @100V	0.31A @100V	0.605A @100V	0.45A @100V	0.81A @100V
Nominal Lumen Output	2650 lm	5000 lm	2650 lm	5000 lm	2650 lm	5000 lm
Battery Backup	no	no	yes	yes	yes	yes
Battery Time	N/A	N/A	90 mins	90 mins	90 mins	90 mins
Emergency Lumen Output	N/A	N/A	400 lm	790 lm	400 lm	790 lm
Battery Life	N/A	N/A	5 years	5 years	5 years	5 years
Lamp Type	LED SMD					
Colour Temperature	5000 K					
Estimated Operation Life	40,000 Hrs					



Part Number UL / CE	Description	ML		OL		Lamp Type	Weight	
		(mm)	(in)	(mm)	(in)		(lbs.)	(kg)
SAB-2	2ft LED Moltec Sabre Light CW	855.0	33.66	815.0	32.09	Dual LED SMD Module	1.90	0.86
SAB-4	4ft LED Moltec Sabre Light CW	1400.0	55.12	1360.0	53.54		2.60	1.18
SAB-2-E	2ft LED Moltec Sabre Light /w Emergency backup SW	1195.0	47.05	1155.0	45.47		TBD	TBD
SAB-4-E	4ft LED Moltec Sabre Light /w Emergency backup SW	1800.0	70.87	1760.0	69.29		TBD	TBD
SAB-2-EH	2ft LED Moltec Sabre Light /w Emergency backup CW	1195.0	47.05	1155.0	45.47		TBD	TBD
SAB-4-EH	4ft LED Moltec Sabre Light /w Emergency backup CW	1800.0	70.87	1760.0	69.29		TBD	TBD

*SW = Standard Weather (0°C to +50°C)

*CW = Cold Weather (-30°C to +50°C)