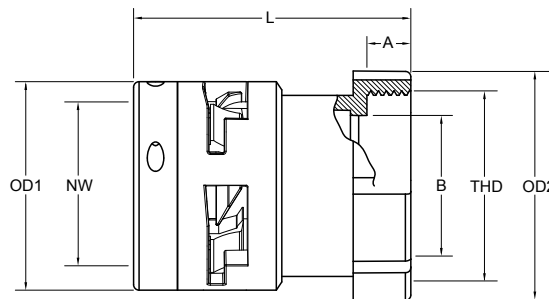
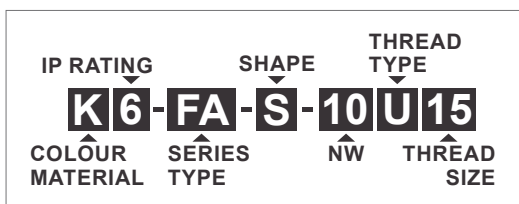


TEAFLEX



- Locking device system provides a quick and secure push-in connection of corrugated conduits
- High-grade formulated polyamide
- Self-extinguishing, free from halogens and cadmium
- Excellent impact strength
- Temperature range: -40°C(-40°F) to 105°C(221°F)
- Short-term to 160°C(320°F)
- Up to IP66 / NEMA 4X protection at conduit side
- Colour: Black standard, other colours available upon request



Specifications are subject to change without notice

**UNEF
THREAD**

Order No.	THD	Fits to Conduit			A		B		L		OD1		OD2	
		NW	mm	in	mm	in	mm	in	mm	in	mm	in	mm	in
K6-FA-S-07U15	5/8-24 UNEF	7	10	1/4	8.0	0.31	9.0	0.35	35.5	1.40	17.0	0.67	21.0	0.83
K6-FA-S-10U15	5/8-24 UNEF	10	12	5/16	8.0	0.31	10.5	0.41	36.4	1.43	20.0	0.79	21.0	0.83
K6-FA-S-10U18	3/4-20 UNEF	10	12	5/16	8.0	0.31	11.0	0.43	36.4	1.43	20.0	0.79	26.0	1.02
K6-FA-S-12U15	5/8-24 UNEF	12	16	3/8	8.0	0.31	12.0	0.47	40.2	1.58	24.0	0.94	21.0	0.83
K6-FA-S-12U18	3/4-20 UNEF	12	16	3/8	8.0	0.31	14.7	0.58	41.2	1.62	24.0	0.94	26.0	1.02
K6-FA-S-12U23	15/16-20 UNEF	12	16	3/8	8.0	0.31	12.0	0.47	41.2	1.62	24.0	0.94	30.0	1.18
K6-FA-S-17U18	3/4-20 UNEF	17	20	1/2	8.0	0.31	16.0	0.63	39.9	1.57	30.0	1.18	26.0	1.02
K6-FA-S-17U23	15/16-20 UNEF	17	20	1/2	8.0	0.31	16.0	0.63	40.9	1.61	30.0	1.18	30.0	1.18
K6-FA-S-17U34	1-3/8-18 UNEF	17	20	1/2	8.0	0.31	16.0	0.63	42.4	1.67	30.0	1.18	42.0	1.65
K6-FA-S-17U40	1-5/8-18 UNEF	17	20	1/2	8.0	0.31	16.0	0.63	59.9	2.36	30.0	1.18	48.0	1.89
K6-FA-S-23U23	15/16-20 UNEF	23	25	3/4	8.0	0.31	22.0	0.87	51.5	2.03	38.0	1.50	30.0	1.18
K6-FA-S-23U34	1-3/8-18 UNEF	23	25	3/4	8.0	0.31	22.0	0.87	50.5	1.99	38.0	1.50	42.0	1.65