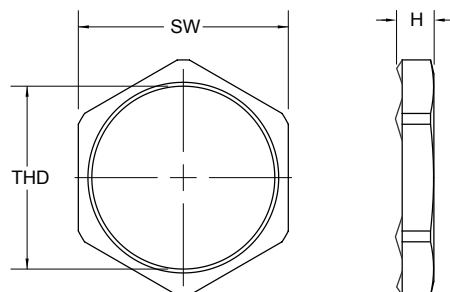




- Nickel-plated brass
- Temperature range: -60°C(-76°F) to 200°C(392°F)



Specifications are subject to change without notice

METRIC
THREAD

Order No.	THD Metric	SW		H	
		mm	in	mm	in
EM-BLNJ-M12	M12x1.5	15.0	0.59	5.5	0.22
EM-BLNJ-M16	M16x1.5	19.0	0.75	5.5	0.22
EM-BLNJ-M20	M20x1.5	24.0	0.94	5.5	0.22
EM-BLNJ-M25	M25x1.5	30.0	1.18	5.5	0.22
EM-BLNJ-M32	M32x1.5	36.0	1.42	5.5	0.22
EM-BLNJ-M40	M40x1.5	46.0	1.81	6.0	0.24
EM-BLNJ-M50	M50x1.5	60.0	2.36	6.0	0.24
EM-BLNJ-M63	M63x1.5	70.0	2.76	7.0	0.28

PG
THREAD

Order No.	THD PG	SW		H	
		mm	in	mm	in
EM-BLNJ-P07	7	15.0	0.59	4.7	0.19
EM-BLNJ-P09	9	18.0	0.71	4.7	0.19
EM-BLNJ-P11	11	21.0	0.83	4.7	0.19
EM-BLNJ-P13	13.5	23.0	0.91	4.7	0.19
EM-BLNJ-P16	16	26.0	1.02	4.7	0.19
EM-BLNJ-P21	21	32.0	1.26	5.2	0.20
EM-BLNJ-P29	29	41.0	1.61	5.7	0.22
EM-BLNJ-P36	36	51.0	2.01	6.0	0.24
EM-BLNJ-P48	48	64.0	2.52	6.5	0.26