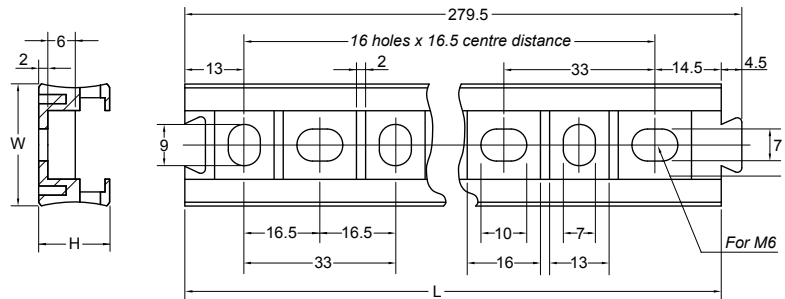


- High-grade formulated polyamide
- Self-extinguishing, free from halogens and cadmium
- Temperature range: -40°C(-40°F) to 105°C(221°F)
- Short-term to 160°C(320°F)
- Colour: Anthracite
- Fits to one-piece tube clamp KC1
- Includes two TX-LK stoppers/spacers for individual positioning of the conduit crossing

IP RATING
TX-CR
COLOUR MATERIAL SÉRIES TYPE



TX-LK Locking distance spacers for TX-CR rail support



Specifications are subject to change without notice

Order No.	Fits to Tube Clamps	L		W		H		M	Order No.	Each CR rail includes 2 locking distance spacers LK series
		mm	in	mm	in	mm	in			
TX-CR	KX-C1-07 to KX-C1-48	275.0	10.83	25.0	0.98	15.5	0.61	M6	TX-LK	