



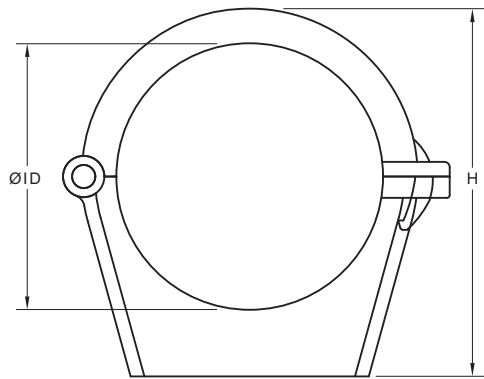
NW23-NW29-NW36



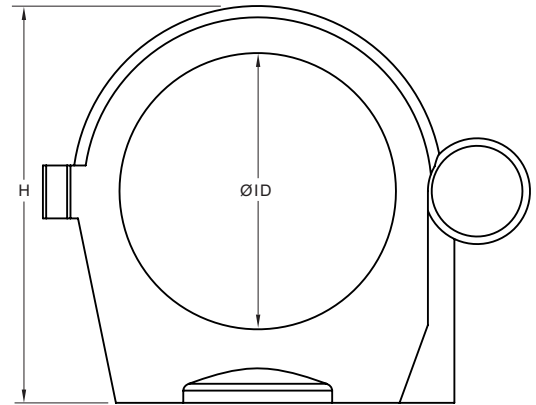
NW48-NW56-NW70-NW95



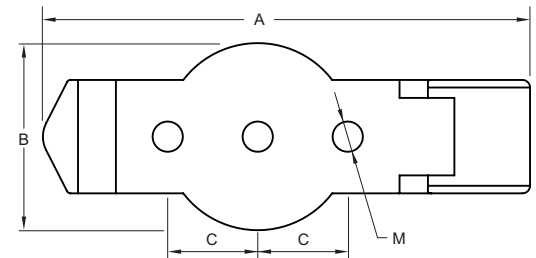
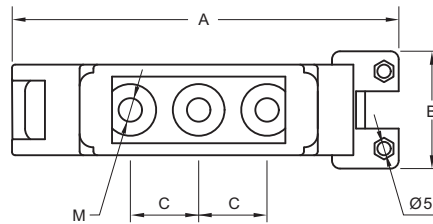
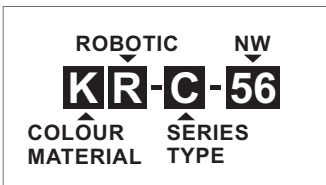
- High-grade formulated polyamide
- Self-extinguishing, free from halogens and cadmium
- Excellent impact strength
- Temperature range: -40°C(-40°F) to 105°C(221°F)
- Short-term to 160°C(320°F)



NW23-NW29-NW36



NW48-NW56-NW70-NW95



Specifications are subject to change without notice

Order No.	Fits to	A		B		C		H		ØID		M	
	NW	mm	in	mm	in	mm	in	mm	in	mm	in	mm	in
KR-C-23	23	49.0	1.93	30.0	1.18	13.5	0.53	50.0	1.97	36.3	1.43	4.2	0.17
KR-C-29	29	58.8	2.31	30.0	1.18	13.5	0.53	60.0	2.36	46.6	1.83	4.2	0.17
KR-C-36	36	85.8	3.38	45.0	1.77	23.8	0.94	88.5	3.48	57.6	2.27	9.0	0.35
KR-C1-48	48	128.8	5.07	49.5	1.95	23.8	0.94	105.0	4.13	73.1	2.88	9.0	0.35
KR-C1-56	56	142.9	5.63	40.0	1.57	25.6	1.01	138.1	5.44	83.4	3.28	9.0	0.35
KR-C1-70	70	165.5	6.52	44.0	1.73	25.6	1.01	145.5	5.73	98.2	3.87	9.0	0.35
KR-C1-95	95	190.9	7.52	50.0	1.97	25.6	1.01	169.2	6.66	120.0	4.72	9.0	0.35