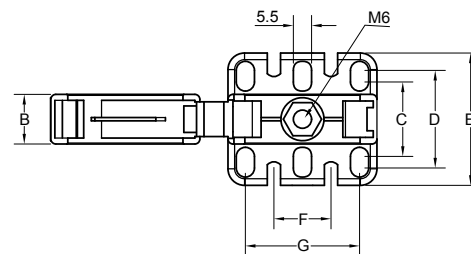
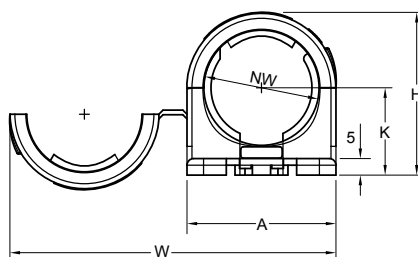




- High-grade formulated polyamide
- Self-extinguishing, free from halogens and cadmium
- Excellent impact strength
- Temperature range: -40°C(-40°F) to 105°C(221°F)
- Short-term to 160°C(320°F)
- Colour: Black standard, other colours available upon request
- Variable assembly options due to six holes fastening
- Totally safe against twisting and movements
- One-piece tube clamp with integrated safety clip
- Especially suitable for reverse overhead installations
- Fits both profile conduits C (Coarse) / F (Fine)

IP RATING	NW
KX-C6-17	
COLOUR MATERIAL	SERIES TYPE



Specifications are subject to change without notice

Order No.	Fits to Conduit			A		B		C		D		E		F		G		H		K		W	
	NW	mm	in	mm	in	mm	in	mm	in	mm	in	mm	in	mm	in	mm	in	mm	in	mm	in	mm	in
KX-C6-17	17	20	1/2	37.5	1.48	14.0	0.55	20.0	0.79	27.0	1.06	35.0	1.38	13.8	0.54	27.5	1.08	35.0	1.38	19.7	0.78	71.9	2.83
KX-C6-23	23	25	3/4	38.0	1.50	15.0	0.59	22.5	0.89	28.5	1.12	38.5	1.52	14.0	0.55	29.0	1.14	42.5	1.67	23.4	0.92	84.0	3.31
KX-C6-29	29	32	1	45.0	1.77	15.0	0.59	22.5	0.89	29.5	1.16	40.0	1.57	17.3	0.68	34.5	1.36	49.0	1.93	26.4	1.04	98.5	3.88
KX-C6-36	36	40	1-1/4	55.0	2.17	15.0	0.59	24.5	0.96	49.5	1.95	60.0	2.36	21.8	0.86	43.5	1.71	58.0	2.28	30.3	1.19	118.0	4.65
KX-C6-48	48	50	1-1/2	67.5	2.66	15.0	0.59	24.5	0.96	49.5	1.95	60.0	2.36	28.0	1.10	56.0	2.20	70.0	2.76	36.4	1.43	143.0	5.63