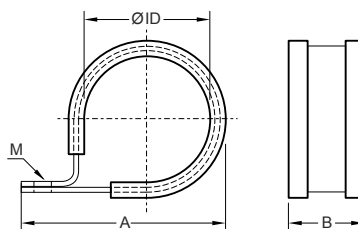




- Galvanized steel according to DIN 3016
- Elastomer is free from halogens and cadmium
- Temperature range: -50°C(-58°F) to 105°C(221°F)



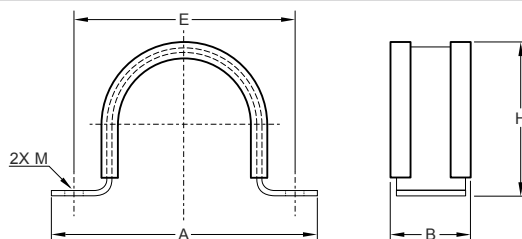
Specifications are subject to change without notice

Order No.	Fits to		A		B		ØID		M
	NW	mm	in	mm	in	mm	in	mm	
CC-07	7	25.0	0.98	13.0	0.51	9.0	0.35	4.0	
CC-10	10	26.0	1.02	13.0	0.51	12.0	0.47	4.0	
CC-12	12	31.0	1.22	13.0	0.51	14.0	0.55	4.0	
CC-14	14	34.0	1.34	15.0	0.59	17.5	0.69	4.0	
CC-17	17	40.0	1.57	17.0	0.67	20.0	0.79	5.0	
CC-20	20	42.0	1.65	16.5	0.65	21.0	0.83	5.0	
CC-23	23	50.0	1.97	17.0	0.67	26.0	1.02	5.0	
CC-24	24	47.0	1.85	16.5	0.65	26.0	1.02	5.0	
CC-29	29	65.0	2.56	21.0	0.83	32.0	1.26	6.0	
CC-36	36	70.0	2.76	21.0	0.83	40.0	1.57	6.0	
CC-48	48	87.0	3.43	21.0	0.83	52.0	2.05	6.0	

CU Galvanized Steel Tube Clamp



- Galvanized steel according to DIN 3016
- Elastomer is free from halogens and cadmium
- Temperature range: -50°C(-58°F) to 105°C(221°F)



Specifications are subject to change without notice

Order No.	Fits to		A		B		H		E		M
	NW	mm	in	mm	in	mm	in	mm	in	mm	
CU-36	36	80.0	3.15	19.0	0.75	48.0	1.89	65.0	2.56	6.0	
CU-48	48	94.0	3.70	19.0	0.75	58.0	2.28	78.0	3.07	6.0	
CU-56	56	118.0	4.65	24.0	0.94	72.0	2.83	98.0	3.86	8.0	
CU-70	70	130.0	5.12	24.0	0.94	85.0	3.35	110.0	4.33	8.0	
CU-95	95	156.0	6.14	24.0	0.94	110.0	4.33	136.0	5.35	8.0	
CU-125	125	200.0	7.87	24.0	0.94	152.0	5.98	180	7.09	8.0	